

DESCRIPTION

Mechanized parking systems Mod. SP1 4000 kg:

Electrically controlled car parking system with hydraulic movement with 2 platforms for parking one car beneath courtyard level and another at courtyard/garden level. This allows the parking of 2 cars in an independent manner or one rollaway car internally and one externally. It is particularly suitable for outdoor installation in courtyards or gardens due to the possibility of matching the upper platform flooring with that of the courtyard or garden itself. This model consists of:

Lift system formed by a steel load bearing frame set at the bottom of the shaft which includes the lifting system consisting of 1 pantograph, 2 cylinders in vertical thrust and 1 cylinder in horizontal;

Two load bearing platforms complete with 4 lateral columns positioned at the corners of the lower platform itself to cover the two vertical cylinders and for support of the upper platform;

Hydraulic control unit for moving, by means of hydraulic fluid, the cylinders for the ascent and descent of the lift; the systems for activating the fluid are electromechanical and wholly managed by the electrical plant. Power is delivered by a three-phase asynchronous 4-pole electric motor, 400 V / 50 Hz.

Reliability of the hydraulic system is guaranteed by a series of valves, and in particular by the flow control valves at the base of the jacks, a maximum pressure valve on the hydraulic system distributor within the fluid tank and a normally closed electro-valve outgoing from the tank.

Electrical system equipped with programmable controller (PLC) by means of software which satisfies the lift's functioning and safety requirements.

The electrical system is equipped with one keypad with removable key, emergency stop button and ascent/descent buttons. It is also equipped with consent for opening doors or gates, consent for movement of the lift only with doors closed.

Depth of shaft: 550 mm

Size of standard shaft: 5360 x 2700 mm

Working stroke: from 1700 to 3500 mm

Installed power of 3 or 4 kW, 400 Volt three phase depending on lifting working stroke and speed.

Completely hot galvanized.

DESCRIPTION

Mechanized parking systems Mod. SP1 5000 kg:

Electrically controlled car parking system with hydraulic movement with 2 platforms for parking one car beneath courtyard level and another at courtyard/garden level. This allows the parking of 2 cars in an independent manner or one rollaway car internally and one externally. It is particularly suitable for outdoor installation in courtyards or gardens due to the possibility of matching the upper platform flooring with that of the courtyard or garden itself.

Lift system formed by a steel load bearing frame set at the bottom of the shaft which includes the lifting system consisting of 1 pantograph, 4 cylinders in vertical thrust and 1 cylinder in horizontal;

Two load bearing platforms complete with 4 lateral columns positioned at the corners of the lower platform itself to cover the four vertical cylinders and for support of the upper platform;

Hydraulic control unit for moving, by means of hydraulic fluid, the cylinders for the ascent and descent of the lift; the systems for activating the fluid are electromechanical and wholly managed by the electrical plant. Power is delivered by a three-phase asynchronous 4-pole electric motor, 400 V / 50 Hz.

Reliability of the hydraulic system is guaranteed by a series of valves, and in particular by the flow control valves at the base of the jacks, a maximum pressure valve on the hydraulic system distributor within the fluid tank and a normally closed electro-valve outgoing from the tank.

Electrical system equipped with programmable controller (PLC) by means of software which satisfies the lift's functioning and safety requirements.

The electrical system is equipped with one keypad with removable key, emergency stop button and ascent/descent buttons. It is also equipped with consent for opening doors or gates, consent for movement of the lift only with doors closed.

Depth of shaft: 600 mm

Size of standard shaft: 5360 x 2700 mm

Working stroke: from 1700 to 3500 mm

Installed power of 3, 4 or 5,6 kW, 400 Volt three phase depending on lifting working stroke and speed.

Completely hot galvanized.

Possibility of installing on the upper platform the same flooring as the surrounding courtyard.

PHOTOS

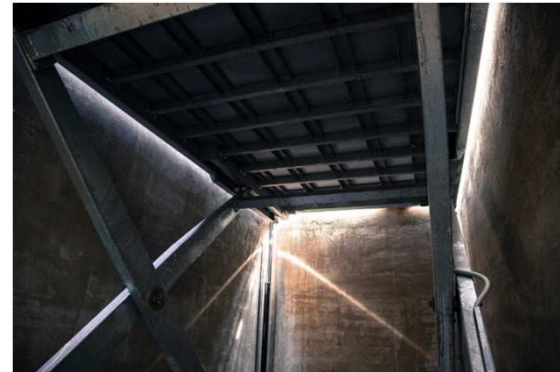


PANTOGRAPH PARKING SYSTEM
DUO BOX Mod. SP1 without person on board
(3 cylinders or 5 cylinders)

PHOTOS



PHOTOS



PHOTOS



PANTOGRAPH PARKING SYSTEM
DUO BOX Mod. SP1 without person on board
(3 cylinders or 5 cylinders)

ACCESSORIES



PANTOGRAPH PARKING SYSTEM
DUO BOX Mod. SP1 without person on board
(3 cylinders or 5 cylinders)

ACCESSORIES

