

### DESCRIPTIONS

#### DUO BOX Mod. DP 03

Electrically controlled car parking system with hydraulic movement with 3 individual platforms one above the other for independent parking of three vehicles. It is particularly suitable for installations in closed garages. The 3 parking spaces are created with horizontal platforms.

The three platforms are integral and move vertically; or alternatively they are positioned in correspondence to the garage floor.

The plant is supplied with adjustable wheel chocks to facilitate vehicle parking.

This parking system functions with a person present positioning the keypad, equipped with removable key, in a position favourable to controlling the plant.

#### PLANT TECHNICAL FEATURES

The DUO BOX Mod. DP 03 parking system consists of 2 steel columns fixed to the floor, 3 integral load bearing platforms which run between supports, 2 hydraulic plunger cylinders positioned laterally on the front part of the plant, 2 chains and a system that ensures synchronised functioning of the cylinders during raising and lowering of the platform. A hydraulic safety valve prevents any accidental lowering of the platforms.

The electrical system envisages a person present, with control panel equipped with emergency button and a removable command key for each parking space.

The hydraulic system consists of hydraulic cylinders, solenoid valve, safety valve, galvanised steel tubing and flexible tubing in high pressure rubber.

The three phase hydraulic control unit is 3 or 5.6 kW.

### DESCRIPTION

#### DUO BOX Mod. DP 06

Electrically controlled car parking system with hydraulic movement with 3 double platforms one above the other for independent parking of six vehicles. It is particularly suitable for installations in closed garages. The 6 parking spaces are created with horizontal platforms.

The three platforms are integral and move vertically; or alternatively they are positioned in correspondence to the garage floor.

The plant is supplied with adjustable wheel chocks to facilitate vehicle parking.

This parking system functions with a person present positioning the keypad, equipped with removable key, in a position favourable to controlling the plant.

#### PLANT TECHNICAL FEATURES

The DUO BOX Mod. DP 06 parking system consists of 2 steel columns fixed to the floor, 3 integral load bearing platforms which run between supports, 2 hydraulic plunger cylinders positioned laterally on the front part of the plant, 2 chains and a system that ensures synchronised functioning of the cylinders during raising and lowering of the platform. A hydraulic safety valve prevents any accidental lowering of the platforms.

The electrical system envisages a person present, with control panel equipped with emergency button and a removable command key for each parking space.

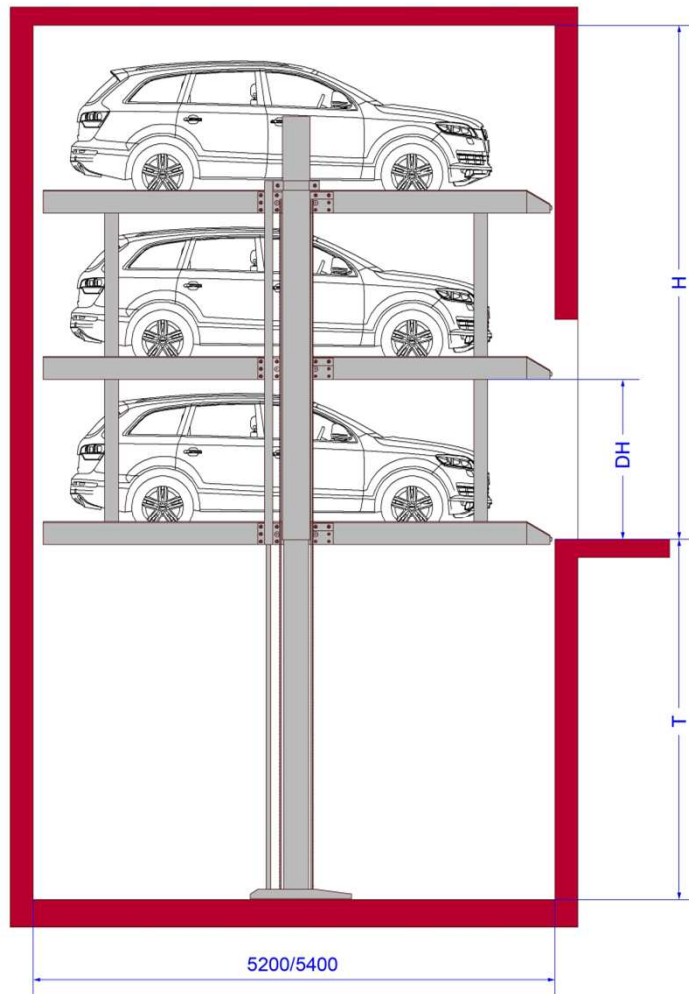
The hydraulic system consists of hydraulic cylinders, solenoid valve, safety valve, galvanised steel tubing and flexible tubing in high pressure rubber.

The three phase hydraulic control unit is 3 or 5.6 kW.

**PHOTO**



### PRODUCT DATA



Model	T	H	DH	Car height upper	Car height middle	Car height lower
DP – 330	3350	4800	1550	1500	1500	1500
DP – 350	3550	5100	1650	1600	1600	1600
DP – 370	3750	5400	1750	1700	1700	1700

**PRODUCT  
DATA**

**PRODUCT DATA**

**DUO BOX Mod. DP 03**

Pit width	Usable platform width
2700	2300
2800	2400
2900	2500
3000	2600
3100	2700

**DUO BOX Mod. DP 06**

Pit width	Usable platform width
5000	4600
5100	4700
5200	4800
5300	4900
5400	5000

### ACCESSORIES

