

**DESCRIPTION****DUO BOX Mod. DI 02**

Electrically controlled car parking system with hydraulic movement with 2 individual platforms one above the other for independent parking of 2 vehicles, one on the upper and one on the lower platform. It is particularly suitable for installations in garages that are not especially high and it requires a limited shaft.

Access to the parking spaces are inclined by roughly 7.5°.

The upper and lower platforms are integral and move vertically; or alternatively they are positioned in correspondence to the garage floor.

The plant is supplied with adjustable wheel chocks to facilitate vehicle parking.

This parking system functions with a person present positioning the keypad, equipped with removable key, in a position favourable to controlling the plant.

The main feature is that the lateral columns are shifted from the centre and thus favour easy opening of the car doors.

**PLANT TECHNICAL FEATURES**

The DUO BOX Mod. DI parking system consists of 2 steel columns fixed to the floor, 2 integral load bearing platforms which run between supports, 2 hydraulic plunger cylinders positioned laterally on the front part of the plant, 2 chains and a system that ensures synchronised functioning of the cylinders during raising and lowering of the platform. A hydraulic safety valve prevents any accidental lowering of the platforms.

The electrical system envisages a person present, with control panel equipped with emergency button and a removable command key for each parking space.

The hydraulic system consists of hydraulic cylinders, solenoid valve, safety valve, galvanised steel tubing and flexible tubing in high pressure rubber.

The three phase hydraulic control unit is 3 or 5.6 kW.

**DESCRIPTION****DUO BOX Mod. DI 04**

Electrically controlled car parking system with hydraulic movement with 2 double platforms one above the other for independent parking of 4 vehicles, 2 on the upper and two on the lower platform. It is particularly suitable for installations in garages that are not especially high and it requires a limited shaft.

Access to the parking spaces are inclined by roughly 7.5°.

The upper and lower platforms are integral and move vertically; or alternatively they are positioned in correspondence to the garage floor.

The plant is supplied with adjustable wheel chocks to facilitate vehicle parking.

This parking system functions with a person present positioning the keypad, equipped with removable key, in a position favourable to controlling the plant.

The main feature is that the lateral columns are shifted from the centre and thus favour easy opening of the car doors.

**PLANT TECHNICAL FEATURES**

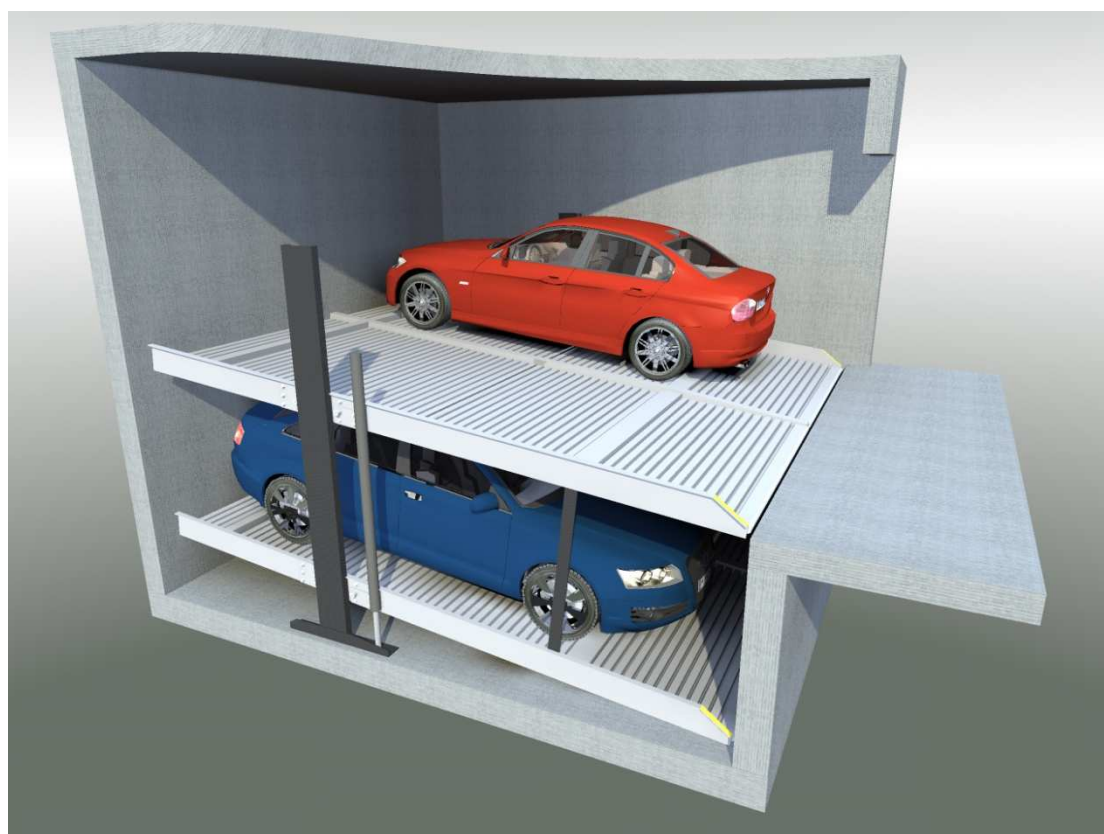
The DUO BOX Mod. DI parking system consists of 2 steel columns fixed to the floor, 2 integral load bearing platforms which run between supports, 2 hydraulic plunger cylinders positioned laterally on the front part of the plant, 2 chains and a system that ensures synchronised functioning of the cylinders during raising and lowering of the platform. A hydraulic safety valve prevents any accidental lowering of the platforms.

The electrical system envisages a person present, with control panel equipped with emergency button and a removable command key for each parking space.

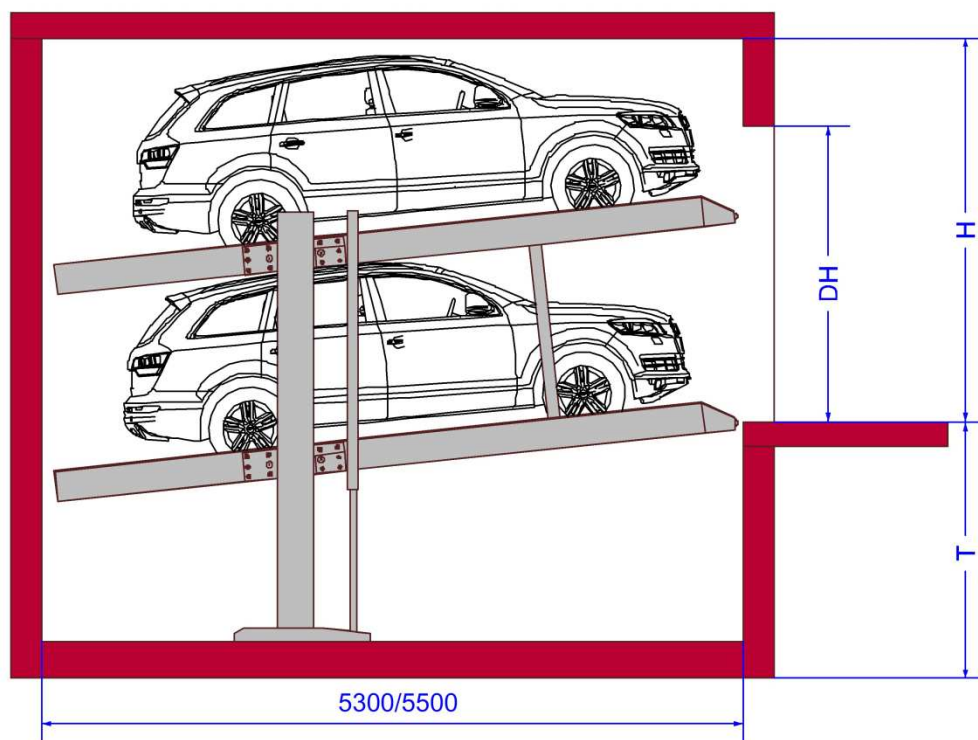
The hydraulic system consists of hydraulic cylinders, solenoid valve, safety valve, galvanised steel tubing and flexible tubing in high pressure rubber.

The three phase hydraulic control unit is 3 or 5.6 kW.

**PHOTO**



### PRODUCT DATA



Model	T	H	DH	Car height upper	Car height lower
DI – 155	1550	2950	1630	1500	1540
DI – 155	1550	3100	1630	1540	1540

**PRODUCT  
DATA****PRODUCT DATA****DUO BOX Mod. DI 02**

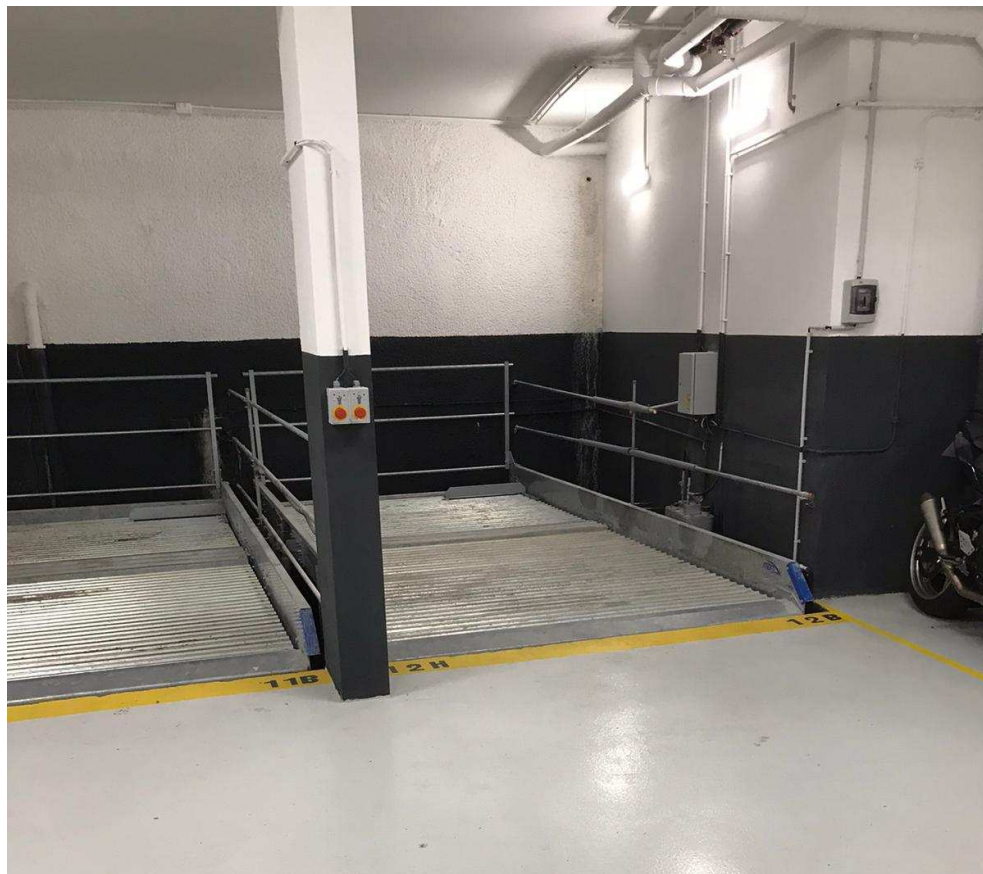
Pit width	Usable platform width
2600	2300
2700	2400
2800	2500
2900	2600
3000	2700

**DUO BOX Mod. DI 04**

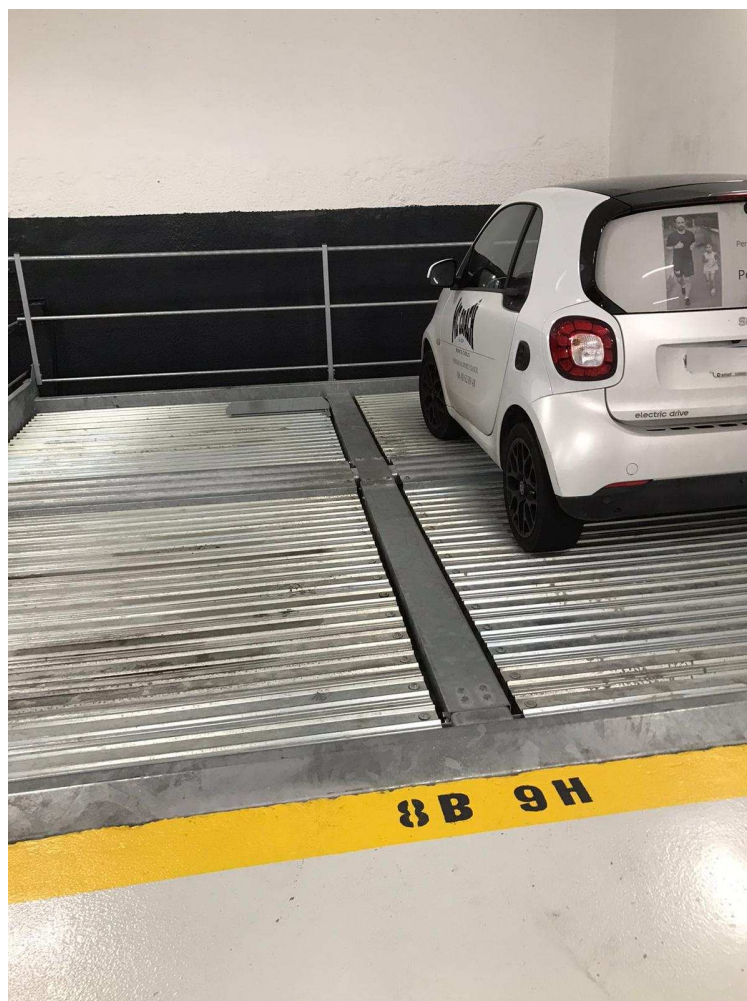
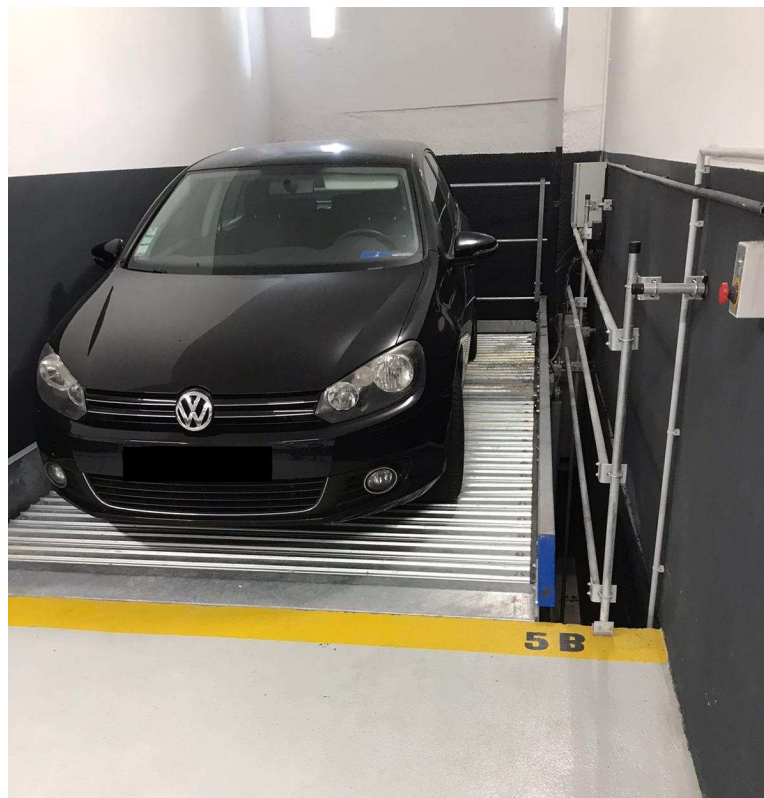
Pit width	Usable platform width
4900	4600
5000	4700
5100	4800
5200	4900
5300	5000



**PHOTOS**

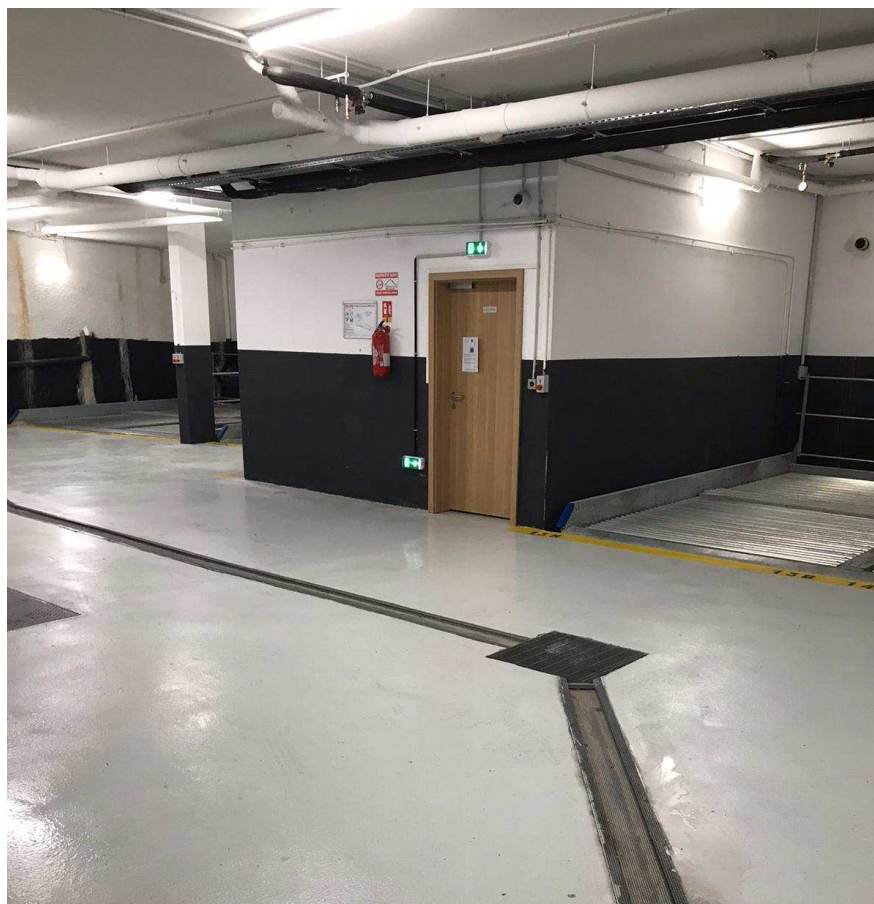
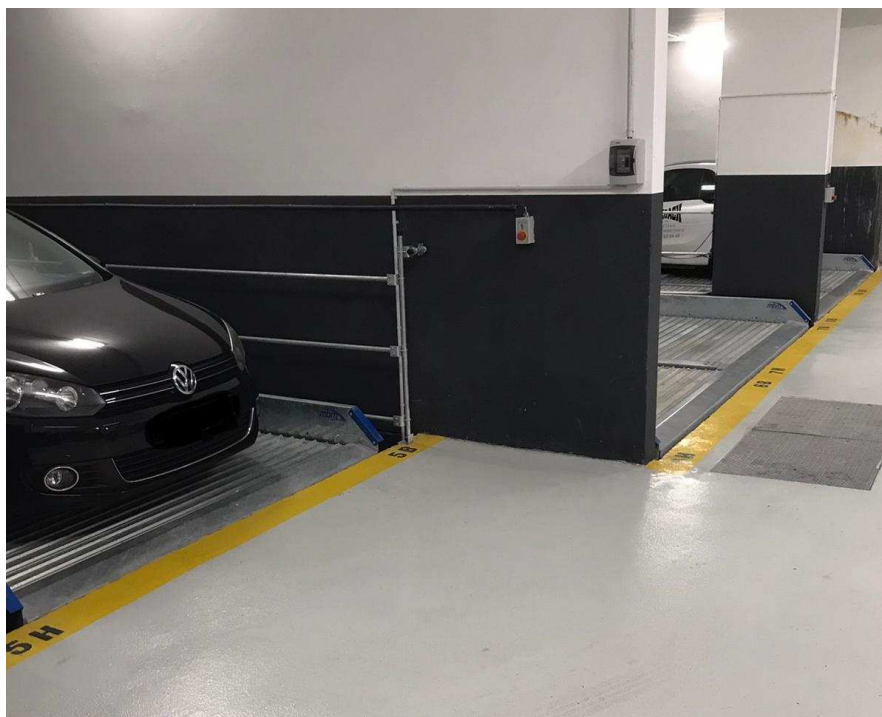


**PHOTOS**





**PHOTOS**





**ACCESSORIES**

